

2025 CMNS BEQUEST LEGACY CHALLENGE

Include the College of Computer, Mathematical, and Natural Sciences (CMNS) in your estate plan, and CMNS will match a portion of your future gift today.

The 2025 CMNS Bequest Legacy Challenge is an incentive program that provides an immediate cash match for donors who document new or increased planned giving commitments to CMNS via the University of Maryland College Park Foundation (UMCPF).^{*} You can direct matching funds **equal to 10% of the value of your legacy gift up to \$10,000**. Through this challenge, the department you choose will experience the impact of your planned gift today and in the years to come.

For example, if you document a \$50,000 gift in your will or trust and complete the CMNS Bequest Legacy Challenge Form, \$5,000 cash from the matching pool will immediately be directed to a current-use fund in the department you choose. Then, the department will receive \$50,000 from your estate after your lifetime.

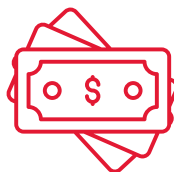
➤ How it works



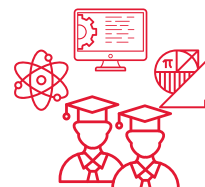
Document your
planned gift using the
CMNS Bequest Legacy
Challenge Form



10% Legacy Challenge
Match Funds are directed
to the current-use fund
you specify^{*}



Immediate impact
on your area of
interest in CMNS



Future impact with
your planned gift

Why the 2025 CMNS Legacy Challenge?

Legacy giving is a powerful way to give, but the impact of these gifts is not immediate. With this matching opportunity, your legacy gift can make an impact today. You can choose to support student scholarships, graduate fellowships, faculty or graduate student research, or other critical needs.

Matching funds are available until June 30, 2026, or until the matching funds are exhausted.

^{*}Some restrictions apply



UNIVERSITY OF
MARYLAND

FEARLESSLY
FORWARD

FREQUENTLY ASKED QUESTIONS



➤ How do I name the UMCPF in my will?

Simply share this suggested wording with your professional advisors: I give to the University of Maryland College Park Foundation, a charitable organization (Tax ID 52-2197313) located at 4603 Calvert Road, College Park, MD 20740, [insert \$ amount, percentage of residuary estate, or otherwise name gifted assets] for the [insert name of use, fund designation, or restriction, such as "for its general educational purposes," "for student financial support," "for the College of Computer, Mathematical, and Natural Sciences," "for the Department of _____," or otherwise state donor restrictions].

➤ Do I have to make a legally binding pledge to participate in the CMNS Bequest Legacy Challenge?

No. Like any revocable bequest, your gift plans can be revised at any time should your circumstances change. That's why making a gift through your will is such a good fit for many people.

➤ What other planned giving arrangements qualify for the CMNS Bequest Legacy Challenge?

Planned giving helps you consider what and when to give, as well as how to structure your philanthropic gifts* to meet your personal financial goals. In addition to a bequest in your will or living trust, some options are:

- Charitable life-income plans such as a charitable gift annuity or charitable remainder trust
- Designation of UMD as beneficiary of a retirement-plan asset, life insurance policy or bank/brokerage account
- Real estate, personal tangible property or other assets

➤ What is the Founders Legacy Society?

The Founders Legacy Society (FLS) honors those who generously support the university through their estate or financial plans, or other legacy gift arrangements. These forward thinking donors demonstrate their steadfast commitment to future generations at UMD and help to ensure the university continues to be a world-class institution for teaching, research and public service. We look forward to welcoming you to FLS when you document your legacy gift through the CMNS Bequest Legacy Challenge.

For more information

Please contact Mike Scott at mjscott7@umd.edu or 301-405-8429. Our team would be happy to work with you to ensure your gift qualifies for the CMNS Bequest Legacy Challenge.

** Eligible planned gifts include bequest commitments in wills and trusts, beneficiary designations, eligible retirement plans and life insurance policies naming the UMCPF as beneficiary. Other planned gift arrangements such as Charitable Gift Annuities, Charitable Remainder Trusts and Charitable Lead Trusts are also welcomed. Some restrictions apply.*

You are advised to seek your own legal and tax advice in connection with charitable gift planning matters. The University of Maryland does not provide legal, financial or tax advice.



UNIVERSITY OF
MARYLAND

FEARLESSLY
FORWARD